



Floating Classroom exploration



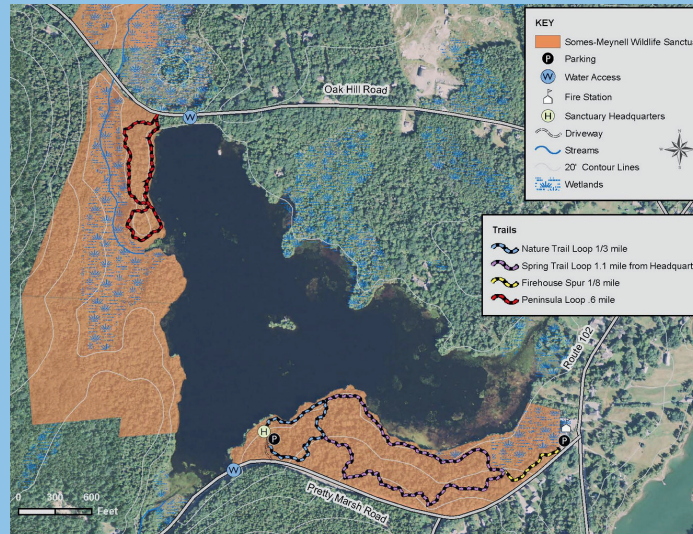
Breeding loon studies



Aquatic ecology teacher training



Courtesy boat inspections



Public trails are located on the south shore parcel with access at SMWS Headquarters and the Somesville fire station. The Peninsula Trail can be accessed off Oak Hill Rd. at the NW corner of Somes Pond.



(207) 244-4027

somesmeynell@gmail.com

somesmeynell.org

FB: somesmeynellwildlifesanctuary

PO Box 171, 57 Pretty Marsh Rd.

Mt. Desert, ME 04660-0171



# Welcome to the SOMES-MEYNELL WILDLIFE SANCTUARY

DEDICATED TO CONSERVATION,  
RESEARCH, AND EDUCATION IN  
THE SOMES POND-LONG POND  
WATERSHED OF MT. DESERT  
ISLAND, MAINE, AND BEYOND



We are a community based non-profit organization focused on protection of wildlife habitat and water quality, education of students of all ages, and environmental research and monitoring projects including:

- Year-round MDI loon population study;
- River herring migration study and fish passage maintenance;
- Aquatic and terrestrial invasive species monitoring and treatment;
- A diverse offering of education programs;
- Maintenance of recreational trails





Public nature walk on Sanctuary trails



Students close-up with alewife



Moving alewife around stream obstacles

## SMWS

### charitable, educational, & scientific purposes:

- preservation, maintenance, management & enhancement of natural & historic values & habitats;
- care and protection of the wildlife of the Sanctuary and its environs;
- education and enjoyment for the residents of Mount Desert Island and the wider public of the values of ecology, conservation and natural history;
- conservation of the Somes Pond watershed; wildlife habitats and natural resources

The Somes-Meynell Wildlife Sanctuary was created in 1985 by Virginia Somes Sanderson. Her vision was to “provide a place where children especially, as well as adults, could learn about flora and fauna and enjoy the varying nature of the land.”

Virginia’s original gift of 32 acres has grown in size to about 250 acres. Many more acres are protected by conservation easements on private properties in our watershed.

The Sanctuary collaborates with many partner organizations including Acadia National Park, College of the Atlantic, state agencies, and non-profit groups.

Many volunteers help with trail maintenance, education programs, loon and alewife monitoring. Please contact us to learn about opportunities to support our work and participate in Sanctuary projects.



Loon watching from HQ deck



Student aquatic invertebrate investigation



Trail work day with HS students